

*Caravel*TM

2022 CARAVEL



 **AIRSTREAM**

About **AIRSTREAM**[®]

Exact craftsmanship. Uncompromising attention to detail. Limitless inspiration for adventure.

There is no denying that Airstream is the world's most iconic travel trailer for a reason. Durable, reliable, and built upon nearly 90 years of innovation, Airstream travel trailers helped write the American travel story. We've crisscrossed the globe, parked at the foot of the Pyramids, explored the National Parks, and camped for the weekend down the road.

Proudly built by hand in Jackson Center, Ohio, USA by hundreds of talented craftspeople, each Airstream travel trailer takes approximately 350 hours to build. Form and function are tightly woven into every thoughtfully-planned inch, and every design is carefully considered. The result is a travel trailer that will last a lifetime – or more.

While we manufacture every Airstream from the wheels up, we like to say that we don't actually build travel trailers. Instead, we build someone's retirement, their well-deserved vacation, or their retreat from a hectic day.

In other words: Airstream builds dreams come true.





About Caravel

The small, single axle Caravel Travel Trailer is as capable and durable as its bigger Airstream siblings. Built to handle long distances, the nimble, easy to tow Caravel is ready to put its stamp on your next adventure. Loaded with high-end features and amenities, a dedicated sleeping space, panoramic windows, Quietstream™ plus temperature control, and a kitchen with stainless appliances, Caravel has it all. Plus, with plenty of storage for a short weekend or an extended trip, Caravel is eager to hitch up and sail the open road.

1 Bath Essentials

Whether you're getting ready for the day or cleaning up after a hike, Caravel features an efficient, spacious bathroom with everything you need close at hand.



2 Convertible Dinette

When positioned as a table and seating, the dinette has plenty of room for four people to comfortably eat and socialize. And when you want some extra sleeping or lounging space, it converts easily – with the table acting as a sturdy base and the back cushions sitting on top.



3 All-electric Refrigerator

The refrigerator runs off battery power, which helps it get cold quicker and efficiently stay cool throughout your trip.

4 Under-bed Storage

With extra under-bed storage, there's ample room for packing that inevitable additional bag.

5 Space for Everything

Included are a hanging closet, cabinets in the kitchen, and larger overhead cabinets throughout. Store your clothes, gear, pots, pans, food, and everything you need.

6 Premium Appliances

Baraldi range vent, square stainless steel sink, and microwave come standard. Add an optional convection microwave in some floor plans.

7 Moen® Galley Faucet

A sleek black Moen faucet brings the modern design and convenience you love at home along for the journey.

8 Memory Foam Mattress

The pillow-top memory foam mattress is made to fit perfectly in the bedroom and help you float into a good night's rest.





INVEST IN YOUR FUTURE

GOOD THINGS COME IN SMALL PACKAGES

Bigger doesn't always mean better. With the Airstream Caravel Travel Trailer, owners get all the luxurious amenities you expect from Airstream in a smaller, more compact package. The Airstream Caravel is a lightweight, single axle escape from your hectic day-to-day. It's packed with features that make it easy to relax, recharge, and get the most out of your travel plans – whether you're planning for tomorrow, next year, or the decades to come.

FROM GENERATION TO GENERATION

With Airstream, you'll find lower maintenance costs, higher resale value, and the lowest cost of ownership of any travel trailer on the market. You'll even save on gas, because the aerodynamic shape translates to better fuel economy. It truly is an investment that your family will enjoy from generation to generation.

1 Roller Blinds and Blackout Curtains

Aluminum roller blinds throughout the travel trailer easily roll open or closed, while blackout curtains in the front and back provide complete privacy.

2 Ultraleather® Seating

Supple and soft, yet durable and strong, the Ultraleather seating resists temperature change and is easy to clean. Seats are also pet-friendly and won't scratch or stain.

3 Entertainment

Four speakers and a subwoofer play your music throughout the trailer. The Caravel also includes a Blu-ray™ player and a 24" LED HDTV.

4 USB and 110V Charging

USB ports and 110V outlets are strategically placed around the travel trailer, so you never have to go far to keep your devices charged and ready.

5 Quietstream™ Climate Control

Efficient, quiet AC system with a heat pump and an electronic thermostat, plus a gas furnace and onboard water heater.

6 Gas Stove with Cast Iron Grates

Gas stove with upgraded cast iron grates lets you cook gourmet meals on the road.





YEARS OF ENJOYMENT

TIMELESS AND TIME TESTED

It's tempting to define the Airstream Caravel by its inspired design choices. From the stainless steel gas stove with cast-iron burners, to the Baraldi vent, elegant black Moen® faucet, and rectangular sink, Caravel is brimming with exciting features. Individually, these highlights make traveling with Caravel a joy. Taken together, the many small touches in Caravel add up to a lifetime of travel enjoyment.

MADE TO LAST FOR GENERATIONS

For nearly 90 years, Airstream travel trailers have been handed down from generation to generation, passed on to family members, friends, or new adventurers – and they look great no matter how many years pass. That's because we hold ourselves to the same exacting quality today as we have since Airstream was founded in 1931.

1

Rear-view Monitoring

A rear-view camera is mounted to the back of the travel trailer to make reversing and parking so much easier.

2

Pre-wired for Solar

Seamlessly add solar panels and monitor them inside the travel trailer.

3

Front Stone Guards

Stainless steel stone guards mounted on the front of the trailer protect the lower segments from road debris.

4

Panoramic Windows

It's all about the view in the Caravel. No matter which side of the Caravel you're on you've got a unobstructed view.

5

Zip Dee® Awning with Sunbrella® Fabric

Upgraded pinstripe front awning provides shaded outdoor space, and the optional Zip Dee® matching window awnings keep the interior cool and private.

6

Exterior Low Pressure Gas Grill Connection

Our low pressure grill connection is made specifically for ease of use with compatible Airstream Weber® Grill.

7

Power Tongue Jack

Makes hitching and unhitching easier and more accessible for everyone.

8

Black Accent Rims

The Caravel is all about style, and the special black accent rims are designed to perfectly match the black pinstripes on the awnings.





DECOR
Pewter



16RB



19CB



20FB



22FB



Seating



Bedding



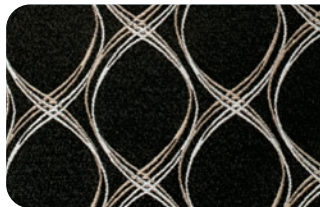
Accent Pillow



Laminates



Dividing Curtain



Flooring





DECOR Tungsten



16RB



19CB



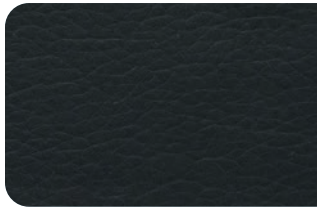
20FB



22FB



Seating



Bedding



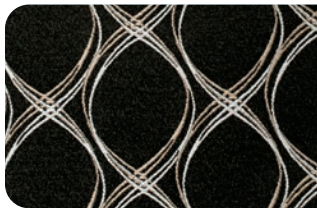
Accent Pillow



Laminates



**Dividing
Curtain**



Flooring



Caravel Specifications

| | 16RB | 19CB | 20FB | 22FB |
|---|-------------|-------------|-------------|-------------|
| Exterior Length | 16' 5" | 19' 5" | 21' | 22' 21" |
| Exterior Width | 8' | 8' | 8' | 8' |
| Interior Width | 7' 7" | 7' 7" | 7' 7" | 7' 7" |
| Exterior Height with A/C | 9' 7" | 9' 7" | 9' 7" | 9' 7" |
| Interior Height with A/C | 6' 7" | 6' 7" | 6' 7" | 6' 7" |
| Hitch Weight (with LP & Batteries) | 490 | 550 | 565 | 525 |
| Unit Base Weight (with LP & Batteries) | 3,200 | 3,850 | 3,975 | 4,000 |
| Maximum Trailer Capacity (GVWR) (lbs.) | 4,300 | 5,000 | 5,000 | 5,000 |
| Net Carrying Capacity (lbs.) | 1,100 | 1,150 | 1,025 | 1,000 |
| Fresh Water Tank (gal.) | 23 | 23 | 23 | 23 |
| Gray Water Tank (gal.) | — | 29 | 30 | 30 |
| Black Water Tank (gal.) | 30 (Combo) | 18 | 18 | 18 |
| 30 AMP Service Single A/C with Heat Strip (BTU) | 13,500 | 13,500 | 13,500 | 13,500 |
| Ducted Furnace (BTU) | 12,000 | 16,000 | 18,000 | 18,000 |
| Refrigerator (12v Electric) | 3.1 cu. ft. | 4.3 cu. ft. | 4.3 cu. ft. | 4.3 cu. ft. |
| Microwave | STD | STD | STD | STD |
| Convection Microwave Oven | — | OPT | OPT | OPT |
| Interior Windows and Skylights | 10 | 11 | 11 | 9 |
| Master Bed Configurations | 48" x 78" | 48" x 76" | 48" x 78" | 54" x 80" |
| Convertible Dinette, Lounge and Bed | 40" x 91" | 40" x 91" | 40" x 76" | 38" x 75" |
| Sleeping Capacity | Up to 4 | Up to 4 | Up to 4 | Up to 4 |

Caravel Exterior Features

| | |
|---|-----|
| Semi-Monocoque Aluminum Superstructure | STD |
| Fluorocarbon Treated UV Protected Aluminum Exterior | STD |
| Temperature Reducing One Piece White Aluminum Roof | STD |
| Thermal Barrier Protection Between Interior & Exterior | STD |
| Seamless Composite Flooring | STD |
| Handcrafted Welded Extruded Aluminum Window Frames | STD |
| Tempered Tinted Windows with Double Cam Latching System | STD |
| Manual Zip Dee® Patio Awning with Sunbrella® Fabric | STD |

| | |
|--|-----|
| ZipDee® Rear & Roadside Window Awning with Sunbrella® Fabric | OPT |
| LED Dimmable Patio Awning Light | STD |
| Polished Bumper with Storage | STD |
| LP (2 – 20 lb. Steel Tanks) with Auto 2-stage Regulator | STD |
| Aluminum Removable LP Cover | STD |
| Multi-Stage Converter | STD |
| Exterior LP Gas Low Pressure Grill Connection | STD |
| Solar Front Window Protection | STD |
| Stainless Steel Front Stone Guard Protection | STD |

Exterior Features (continued)

| | |
|--|-----|
| Exterior Shower with Hot & Cold Water | STD |
| Lockable Fresh Water Tank Inlet | STD |
| City Water Inlet with Water Pressure Regulator | STD |
| Black Tank Flush System | STD |
| Hand Painted Chassis | STD |
| Torsion Axle Suspension | STD |
| Shock Absorber | STD |
| Powered Hitch Jack with Light | STD |
| 4 Manual Heavy Duty Stabilizer Jacks | STD |
| Goodyear® Endurance ST225/75R15 Tires, Balanced | STD |
| Stylized Aluminum Wheels | STD |
| Nev-R-Lube® Sealed Bearings | STD |
| Nev-R-Adjust® Brakes | STD |
| Spare Tire – Full Size | STD |
| Solar Pre-wire (3 Rooftop & 1 Front Access Points) | STD |
| 90w Solar Package with Interior Monitor & AGM Battery | OPT |
| Rear View Monitoring System | STD |
| Cable TV Hookup | STD |
| Dedicated Waste Hose Storage | STD |
| Custom Aluminum Handcrafted 26 in. Wide Entry Door with Window | STD |
| Aluminum Entry Door Handle | STD |
| Unique Front Door Key with Heavy Duty Deadbolt | STD |
| Cast Aluminum Door Hinges | STD |
| Thule Aluminum Entry Step | STD |
| LED Entrance Light | STD |
| LED Tank Service Light | STD |
| LED Storage Compartment Light | STD |
| Cast Aluminum LED Tail Lights | STD |
| License Plate Bracket with LED Light | STD |
| Enclosed Aluminum Insulated Heated Underbelly | STD |

Caravel Interior Features

| | |
|---|-----|
| Complete Aluminum Interior Walls and Ceiling | STD |
| Quietstream™ A/C with Heat Pump & Electronic Thermostat | STD |
| Fantastic® Fan with Thermostat & Automatic Rain Sensor | STD |
| Probeless Tank Monitoring System | STD |
| Insulation | STD |
| Handcrafted and Welded Aluminum Screen Door with Guards | STD |
| Panoramic Front Windows with Blackout Shades | STD |
| Handcrafted Italian Lite-Ply Laminated Cabinetry | STD |
| Seamless Vinyl Flooring | STD |
| LED Interior Lighting with Dimmer | STD |
| Overhead Storage with Sliding Doors | STD |
| Tankless On Demand LP Water Heater | STD |
| 1000W Pure Sine Inverter | STD |
| Coat & Key Hooks | STD |
| Airstream Connected Pre-wire | STD |

Galley, Dinette and Lounge Features

| | |
|--|-----|
| 3 Burner Gas Cooktop (20, 22); 2 Burner Gas Cooktop (16, 19) | STD |
| Baraldi Cooking Vent with Light | STD |
| Laminate Galley Top | STD |
| Stainless Steel Sink | STD |
| Laminate Dinette Top | STD |
| Ultraleather® Dinette Cushions | STD |
| Dinette Converts to a Lounge and Sleeping Accommodations | STD |
| Flatware Organizer | STD |
| JL Stereo with Bluetooth®, Surround Sound and Subwoofer | STD |
| LG LED HD TV with Omni Directional Antenna | STD |
| Blu-Ray™ DVD Player | STD |
| Aluminum Roller Blinds | STD |
| Moen® Faucet | STD |

Bedroom Features

| | |
|-------------------------------------|-----|
| Pillow Top Memory Foam Mattress | STD |
| Quilted Bedspread | STD |
| Decorative Throw Pillows | STD |
| Sleeping Pillows | STD |
| Reading LED Lights | STD |
| Under Bed Storage | STD |
| Overhead Storage with Sliding Doors | STD |
| Wardrobe with Hanging Bar | STD |
| LED HD TV (Shared with Lounge) | STD |
| Blackout Curtain(s) | STD |

Bathroom Features

| | |
|---|-----|
| Removable Hand Held Shower Head with Shut Off | STD |
| Toilet | STD |
| Lavy Sink** | STD |
| Roof Vent/Fan | STD |
| Towel Bar/Ring | STD |
| Retractable Clothes Line in Shower | STD |
| Moen® Bathroom Faucet** | STD |

Additional Features

| | |
|---|-----|
| Airstream Power Plus Lithium Kit - Dealer Installed | OPT |
| Airstream Logo Entrance Mat | STD |
| Fire Extinguisher | STD |
| LP, Smoke & Carbon Monoxide Detectors | STD |
| Built In Winterization Kit | STD |
| TRA Certified Green: Emerald Status (Highest Rating) | STD |
| Internally Routed A/C Condensation Drain Line to Wheel Well | STD |
| 3 Year Airstream Limited Warranty (Transferable) | STD |
| 3 Year 24/7 Coach-Net® Roadside Assistance | STD |

** N/A on 16RB



adventure, inspired by
AIRSTREAM

1001 West Pike
 Street, P.O. Box 629
 Jackson Center, OH
 45334 USA
 937-596-6111

www.airstream.com

The Airstream Travel Trailer Fleet



Product information, specifications, and photography in this brochure were as accurate as possible at time of printing. Photographs may contain some features that are optional on your vehicle.

Since we continually strive to improve our products, actual products may differ. Prices and specifications are subject to change without notice. All capacities are approximate and dimensions are nominal. Some features or options may be different or unavailable in other countries.

Warning – This information is intended as a guide only. Weights of individual vehicles may vary. Consult your owner’s manual for complete loading, weighing, and towing instructions. Do not overload the travel trailer.

AIRSTREAM®, the Airstream travel trailer trade dress, and all related model names, slogans, logos, trade dress, and trademarks are owned or used under license by Airstream, Inc. All other trademarks are owned by their respective owners.

All content and images
 © Airstream 2021

MKT-000069
 8/21 D